

PROFESSIONAL COLOUR MANAGEMENT

THE EFI FIERY® CONTROLLER FOR
TASKalfa 7550ci AND 5550ci SERIES

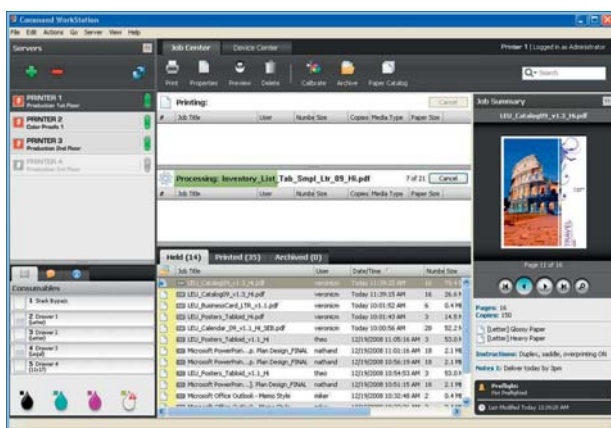


COUNT ON US.



MADE TO MEET ALL YOUR COLOUR NEEDS

If colour quality is important for your business, then the EFI Fiery® controller is the perfect choice for your business. The EFI Fiery® controller will provide precise colour control with a range of tools that make colour management fast and easy. Combined with the KYOCERA colour TASKalfa 7550ci and 5550ci series, the EFI Fiery® controller is your guarantee for optimised productivity and high standards of professional colour management.



SMART-RIP TECHNOLOGY – OPTIMAL INFORMATION FLOW

The EFI Fiery® controller works with intelligent Smart-RIP technology to ensure maximum print performance for even the most complex colour images. An interactive interface provides convenient access to all frequently used functions and settings. The EFI Fiery® controller comes complete with a wide range of functions that optimise every aspect of the colour creations you produce.

COLOURWISE – A SMART APPROACH TO COLOUR REPRODUCTION

ColourWise® is a RIP-based colour management system that ensures constant and reliable colour reproduction, time after time. An intelligent selection of colour tools enable users to attain precisely the colours that they need. Highly convenient when working with the TASKalfa 7550ci and 5550ci series.



ColourWise also includes EFI ColourCal which uses the multifunctional device's scanner to calibrate colours. With sixty values being taken for every primary colour and two reference scales, measurement variations and colour variations on a page are accurately compensated for. The result is always an image quality that will satisfy even the most demanding graphic artist.



FLEXIBLE PAPER HANDLING – FOR PROFESSIONAL FINISHING

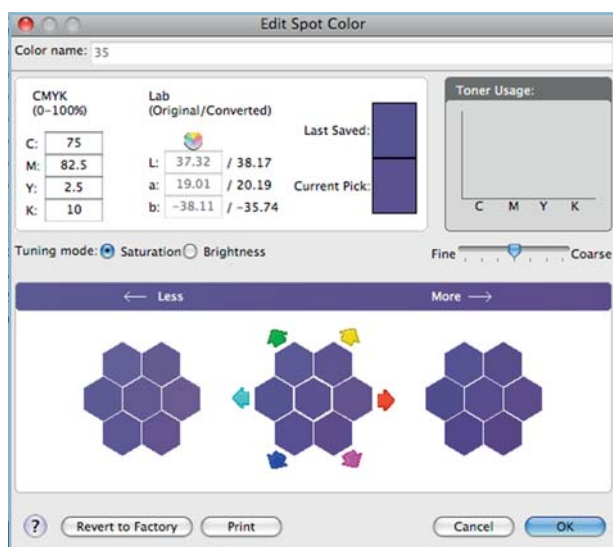
To match the high-quality colour output with an equally high-quality and productive finishing, the new KYOCERA TASKalfa 7550ci and 5550ci series offer a wide range of paper handling and finishing options. Select from two different finishers with paper capacities of up to 4,000 sheets that staple and punch up to 65 sheets at a time. Or add the modular finisher with optional booklet and tri-folding unit to give you a brilliant colour output with professional finishing.

HIGHLIGHTS:

- ▶ Colour management for precise control of CMYK, RGB, CIElab and special colours
- ▶ Smart RIP technology for high-level productivity even when printing complex graphic documents
- ▶ Intelligent order processing management
- ▶ Wide range of functions for document workflow optimisation
- ▶ State-of-the-art data security from the client to the printer
- ▶ Seamless network integration
- ▶ Adobe® PostScript®

EFI SPOT-ON® – THE DOORWAY TO ALL MAJOR COLOUR SYSTEMS

EFI Spot-On® supports all established special colour systems such as HKS, Toyo and DIC. Colours from the Pantone® library of colours are automatically translated into the optimal CMYK values. For any other colour systems that you may use, EFI Spot-on® translates them all, guaranteeing consistently precise colour reproduction.

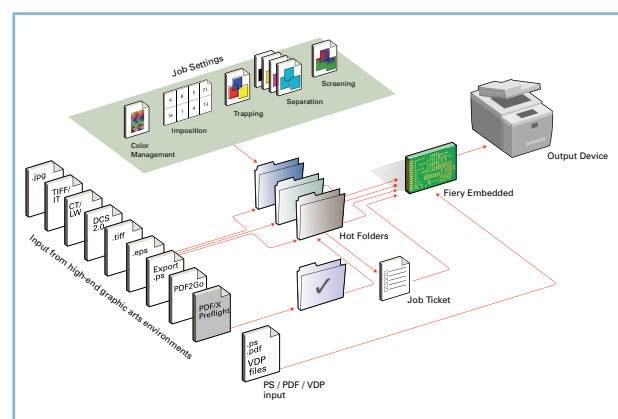


AUTO-TRAPPING – NOTHING BUT COLOUR

Auto-trapping is a fast and simple way to ensure that your image output is always the best it can be. This function safeguards against the appearance of white edges at the transition from one colour area to another. All parameters for the colour coverage can, of course, be precisely adjusted to meet specific needs.

HOT FOLDERS – SIMPLIFIED SETTING APPLICATION

The hot folders function allows users to assign predefined settings to a folder. When a job needs to be printed to a certain specification, the user can simply drag and drop the files into the corresponding folder. No time is lost re-entering settings, and even those not familiar with how to use the device can carry out the most complicated printing jobs.

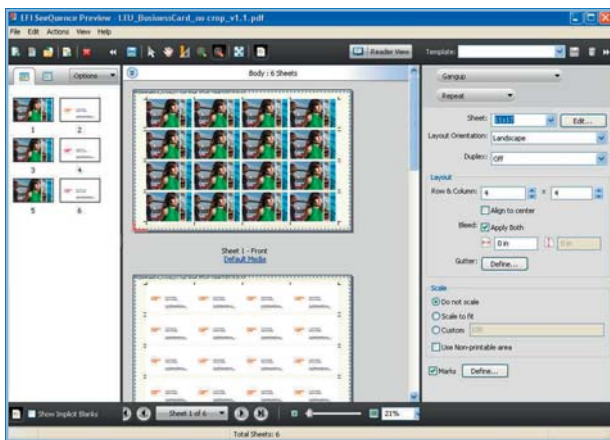


VIRTUAL PRINTER – AUTOMATING COMPANY PRINTING PROCESSES

Virtual printers can be set up and preconfigured by the network administrator. This enables defined company processes to be carried out automatically, ensuring that there are no mistakes due to human error.

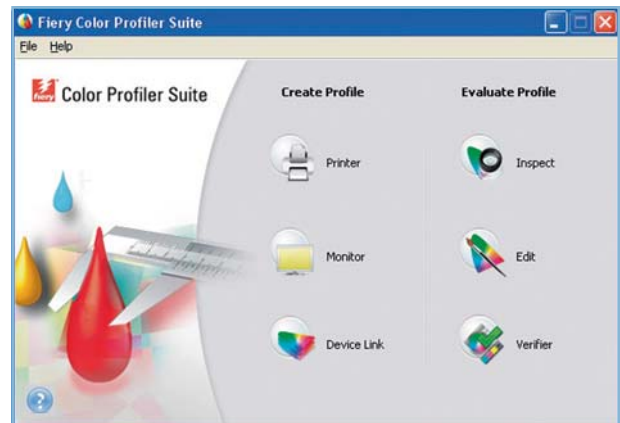
FIERY® SEEQUENCE IMPOSE – PREPARING LARGE DOCUMENTS FOR PRINT

The Fiery® controller enables you to impose multi-page documents without the help of specialised software. Even without the original source file, print jobs can be imposed as needed and the final files stored on the server as a PDF, or sent on via the internet to your clients.



COLOUR PROFILER SUITE – FOR EFFICIENT OVERVIEW AND MANAGEMENT

Enables users to set up a colour profile, show the profile and test it, as well as providing control over every single step in the colour printing process.



SECURE ERASE – GONE WITHOUT A TRACE

The optional “Secure Erase” function provides a high level of document security on the Fiery® server or controller. “Secure Erase” removes electronic data and hidden images from the Fiery® hard drive whenever a job is deleted. At the time of deletion, the job file is removed multiple times without leaving any information that could lead to a reconstruction of the file.



COUNT ON US.

As one of the leading manufacturers of office document solutions, KYOCERA is committed to delivering consistently high-quality products and services. We not only provide you with the most reliable hardware and software, but also offer exceptional service, comprehensive consulting and tailor-made financing. Whatever your needs – you can count on us. Want to know more? Simply get in touch with your local KYOCERA Business Partner.

Fiery® Printing System 11/12

Fiery® Controller for
Printing System 11 for TASKalfa 3050ci, 3550ci, 4550ci, 5550ci and
Printing System 12 for TASKalfa 6550ci, 7550ci.



EFI offers you complete print solutions that can help to increase company productivity and profits. Find out more at www.efi.com.

General

Engine

Printing System 11/12

Controller

EFI Fiery® System Version Sys9eR2

CPU

Intel Celeron 2.66 GHz processor

Memory capacity

1 GB RAM + 160 GB HDD

Interfaces

Ethernet (1000Base-T/100Base-TX/10Base-T),
USB-Direct-Print

Network protocol

EtherTalk II, TCP/IP, Novell IPX iPrint

PostScript fonts

136 Adobe® PostScript® fonts, PostScript3
80 PCL fonts

Operating systems

Windows 2000, MacOS 10.4 or higher

File format support

Adobe® PostScript® Level 1, 2, 3
Adobe PDF 1.5, 1.6 and 1.7 (Acrobat® 6, 7, 8 and 9)
Encapsulated PostScript (EPS)
MS Office document formats: doc, xls, ppt, pub (via Hot Folders)

Colour mode

Auto colour (ACS), colour, monochrome

Safety standards

TÜV/GS, CE

Security

IP Filtering for IPv4/IPv6

Secure Erase (optional)

Backup and restore

Encryption of critical information

Fiery® Utilities

Fiery® Driver 4.1.

Fiery® Command WorkStation 5.2

Fiery® WebTools™

Fiery® Hot Folders 3.1 (optional)

Fiery® Colour Technology

Fiery® ColourWise®

Fiery® Calibrator

Fiery® Image Enhance

PANTONE® Calibrated System

Fiery® Spot-On (optional)

Auto Trapping

Image Smoothing

Productivity & Workflow

Spool-RIP-Print Simultaneously

Fiery® Hot Folders/Virtual Printers (optional)

Booklet Maker

Force Print

Personalised communication with Fiery® FreeForm

Options

EFI Fiery® Productivity Package

EFI Fiery® Hot Folders/Virtual Printers

EFI Fiery® SeeSequence Suite

EFI Fiery® SeeSequence Impose

EFI Fiery® Colour Profiler Suite

Fiery® Spot-On

EFI Secure Erase



Your **KYOCERA Business Partner:**

KYOCERA MITA (UK) Ltd, 8 Beacontree Plaza, Gillette Way, Reading RG2 0BS
Tel: 0118 931 1500, Fax: 0118 931 1108
www.kyoceramita.co.uk, info@kyoceramita.co.uk

* KYOCERA does not warrant that any specifications mentioned will be error-free. Specifications are subject to change without notice. Information is correct at time of going to press. All other brand and product names may be registered trademarks or trademarks of their respective holders and are hereby acknowledged.

